

DOMESTIC VIOLENCE AND ITS IMPACT ON YOUTH SUICIDE

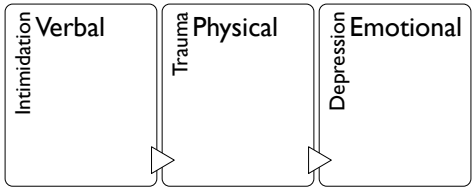
DEBBIE MANUEL, MSW

This project is supported by Grant No. 2014-TA-AX-K047 awarded by the Office on Violence Against Women, U.S. Department of Justice. The opinions, findings, conclusions, and recommendations expressed in this program are those of the author(s)/presenter(s) and do not necessarily reflect the views of the Department of Justice, Office on Violence Against Women.

DEFINITION OF VIOLENCE

- Who?
- What?
- When?
- Where?
- Generational Definition
- Urban vs. Rural
- Among peer group (football)
- Professions (police, fire,)

STUDIES FOCUS ON:

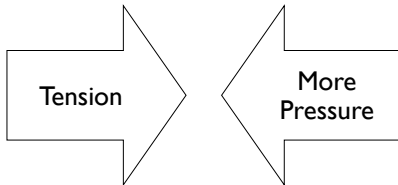


```
graph LR; A[Intimidation Verbal] --> B[Trauma Physical]; B --> C[Depression Emotional];
```

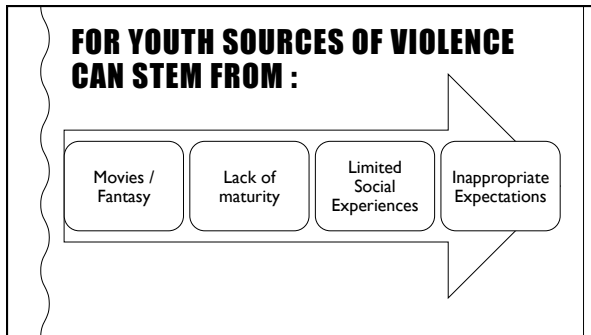
IMAGINE COMPLEX RELATIONSHIPS

- Triggers
- Walking on Eggshells
- Accusations
- Tug of Wars
- Zingers
- Presence of Unresolved Issues
- Void Substitutes
- Increased Anxiety
- Quick to React
- Intense chain of reactions
- “Get them, before they get you”
- On Edge
- Lots of Rules / Deprived of Social life
- Paranoia

**IF INTERVENTION DOES NOT OCCUR,
IT CAN LEAD TO MORE CONFLICT**

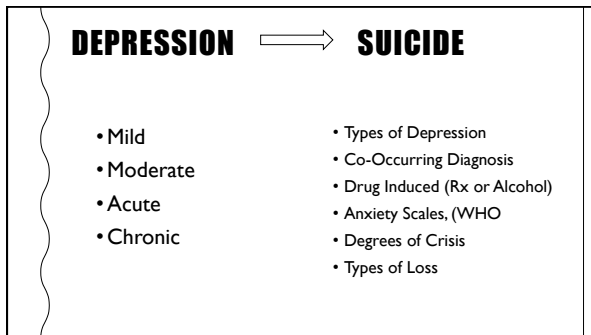


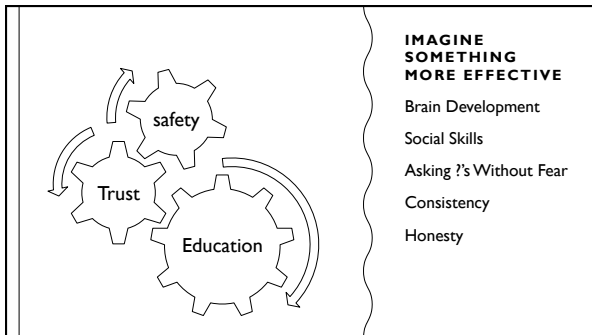
FAST FORWARD TO SOLUTIONS...



EDUCATIONAL APPROACH

BASED ON PROFESSIONAL EXPERIENCES







**WHAT WORKED
FOR YOU?**

COLLABORATIVE APPROACH

- Integrating a Cultural Approach
 - Purpose, identify, tribal teachings, family
 - Creating sibling interventions
- Integrating Language
- Peer to Peers Intervention
- Leadership Development (Sports, Challenges, Youth Empowerment)



DEBBIE MANUEL, MSW
DEBBIE.MANUEL@MORNINGSTARLEADERS.ORG

MORNING STAR LEADERS, INC

This project is supported by Grant No. 2014-TA-AX-K047 awarded by the Office on Violence Against Women, U.S. Department of Justice. The opinions, findings, conclusions, and recommendations expressed in any of this program are those of the author(s)/ presenter(s) and do not necessarily reflect the views of the Department of Justice, Office on Violence Against Women.
